

FROSTBITE 2018/2019

Format: PURSUIT

Course:

- Course and Start Times will be posted in the OFFICIAL RACE NOTICE BOARD on the NORTH side of the clubhouse around 1PM
- Will be determined on day of race by the Frostbite Union
- Will be chosen from a list of predefined courses ATTACHED to this notice

Rules: Rules will be pursuant to the Racing Rules of Sailing (RRS)

Scoring: The point system used for this series is based on the **number of boats racing**. For example, say 10 boats are racing. The first place finisher receives 10 points, second place 9 points, third place 8 points, and so on. If you start the race and don't finish, you will receive one point. If there are 4 boats racing, 1st place receives 4 points, 2nd place receives 3 points, etc. Basically, you are rewarded more for beating 9 boats as opposed to beating 3 boats. If you are the only boat to complete the race out of 10 boats, you still get 10 points while everyone else gets one point.



The START and FINISH: 2PM Scratch boat starts. The START line will now be between an inflatable mark and the RED PY nun. The FINISH line will be between an ORANGE flag on the Committee Boat in its wet slip on A-Dock and the GREEN H Can. Direction of start will be based on Course Number.

Schedule of Races

Race 1: December 2
 Race 2: December 16
 Race 3: January 1
 Race 4: January 20
 Race 5: February 3
 Race 6: February 17
 Race 7: March 3

Start Type

Downwind
 Whaler
 Standard
 Standard
 Standard
 Downwind
 Whaler

After Party Food Themes:

Chili
 Afro-Caribbean
 Soups (Polar Bear Plunge)
 Canadian Food
 Heart Attack
 Grandma's Favorites
 Penguin Pizza

Entry Fee: FOOD (for the after party)

Frostbite Series FAQs

(be sure and read questions in whiny kid voice)

Q. Why are we doing pursuit races, I hate pursuit races?

A. Pursuit races are fun, and scientists have proven that people like fun. Weather is science, so experiment with cold fronts, ice, snow, and improve yourself.

Q. What do we do if the wind is over the hill; I hate wind over the hill!

A. That would probably be a reaching race and my boat is awesome reaching, yours probably is too. So bundle up, hang on, and have some hot toddies, cocoa, or other refreshing beverages onboard. Great opportunity to introduce a newcomer to our beloved sport, and we have new courses this year!!!!

Q. It is cold outside in the winter, why are you people sailing in the winter, I hate cold weather!

A. I have no idea why we are still doing it, I guess because it is fun and gets us outside????

Q. I don't want to socialize with NAME REDACTED after the race. I only want to race and then go home and not hang out afterwards?

A. Sorry, we all think NAME REDACTED is smelly, wears strange clothing, is an awful cook, and drinks only cheap alcohol found on the bottom shelf at Aldi. Frostbite Union (FU) requires mandatory food and fellowship, relax maybe NAME REDACTED will turn out to have a piece of equipment you can borrow someday so be nice to him/her/xi/hirs/ve/pers. (Interesting note October 17th is International Pronoun Day).

Q. I prefer to bring high calorie, fatty, sugary, and non-nutritious foods to the after-party, will I be ostracized?

A. Yes. But your food will be the most popular.

Q. How come we have no cool apparel with the Frostbite logo this year?

A. We will offer some fabulous designer cookware at a later date. Something like butter dishes with Larry Ellison's face, Ted Turner soup tourines, or Ken Reid jam jars.

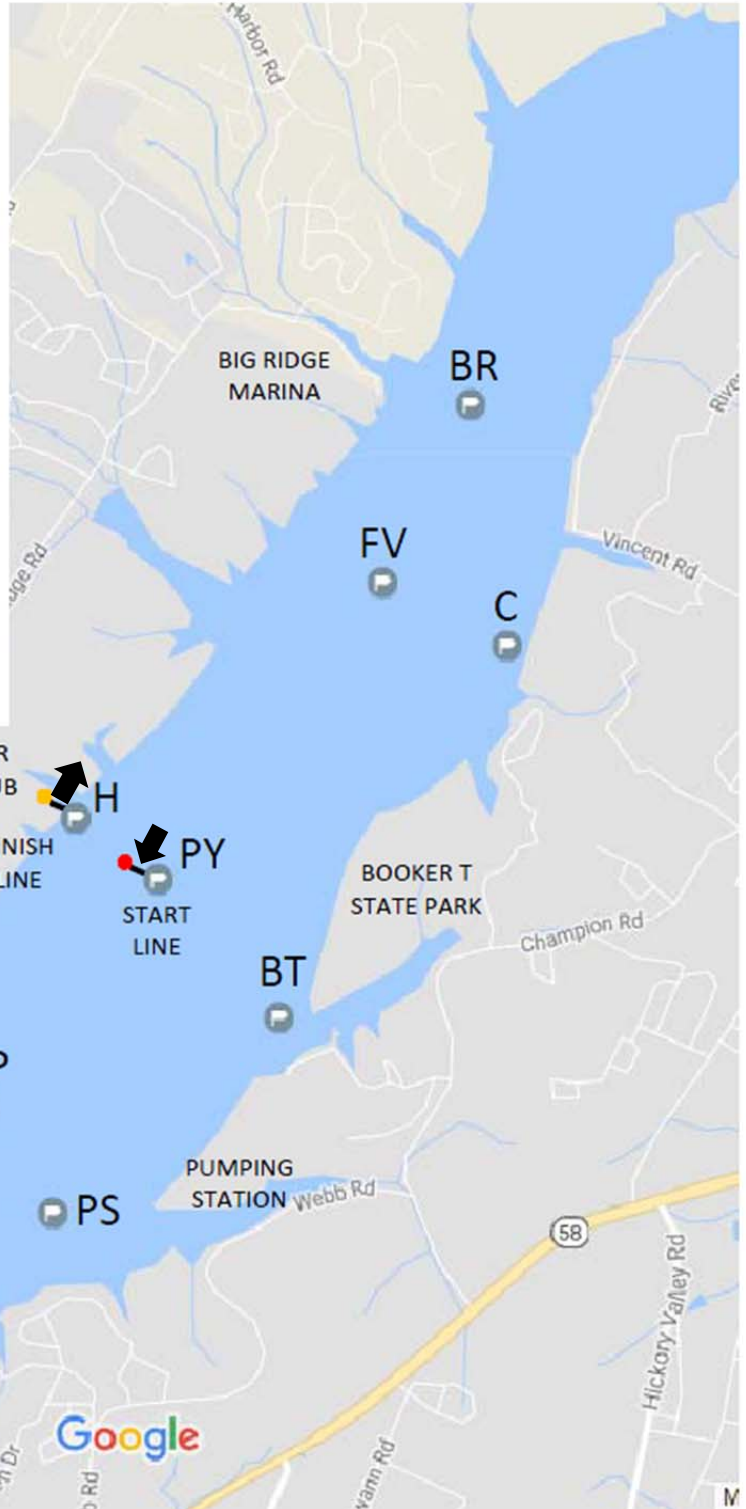
COURSE 1

PY-BK-H

2.301 Nautical Miles

MARKS OF THE COURSE

- BK – BLINKER (DAY MARK)
- BR – BIG RIDGE NUN
- BT – BOOKER T MARK
- C – CASTLE MARK
- CG – COAST GUARD NUN
- FV – FAIRVIEW NUN
- GP – GOLD POINT NUN
- H – HARBOR CAN
- LS – LAKESHORE NUN
- PS – PUMPING STATION MARK
- PY – PYC NUN



PHRF TIME ON DISTANCE PURSUIT RACE		
Course 1 - Start Times	PY-BK-H	
DISTANCE	2.301	
Scratch Boat ET	635.076	
BOAT	PHRF	Start
Catalina 22 NS	276	:00
Catalina 22, Rainbow 24 NS	270	:14
Morgan 22 NS, Oday 222	264	:28
Hunter 23.5 NS	261	:35
Cal 24 NS, Oday 25 NS	255	:48
Rainbow 24	252	:55
Jeanneau Sonic 23 NS	246	1:09
Morgan 22	243	1:16
Oday 28 NS	240	1:23
Catalina 310 WK NS	231	1:44
S2 6.9 NS	228	1:50
Pearson 28 NS, Ericson 28 NS	219	2:11
Oday 28 IB NS, Ranger 26 NS	216	2:18
S2 6.9	210	2:32
San Juan 28 NS	207	2:39
Oday 28 IB	204	2:46
Freedom 30 NS, Holder 20 NS	201	2:53
Ranger Fun 23 NS, C&C 27-3 OB NS	198	2:59
J22 NS, S2 7.9 IB NS, Pearson 28, Ericson 28	192	3:13
Merit 25 NS	189	3:20
J24 NS, S2 7.9 OB NS, San Juan 28	186	3:27
Wavelength 24 NS, Holder 20	183	3:34
Ranger Fun 23	180	3:41
C&C 27-3 OB, Catalina 310 WK	177	3:48
J22, S2 7.9 IB	174	3:55
Merit 25	171	4:02
J24, S2 7.9 OB	168	4:09
J32 SD NS	165	4:15
Wavelength 24, Toufinou 8 NS	162	4:22
Impulse 26 OB NS	150	4:50
J32 NS	147	4:57
J32 SD	141	5:11
Impulse 26 OB	135	5:24
J29 MHO NS, Toufinou 8, Seascope 24 NS	132	5:31
Melges 24 NS, J32, J92S NS	123	5:52
J29 MHO, Corsair F24 MKII NS	111	6:20
Seascope 24	102	6:40
Melges 24, J92S	93	7:01
Corsair F24 MKII	81	7:29

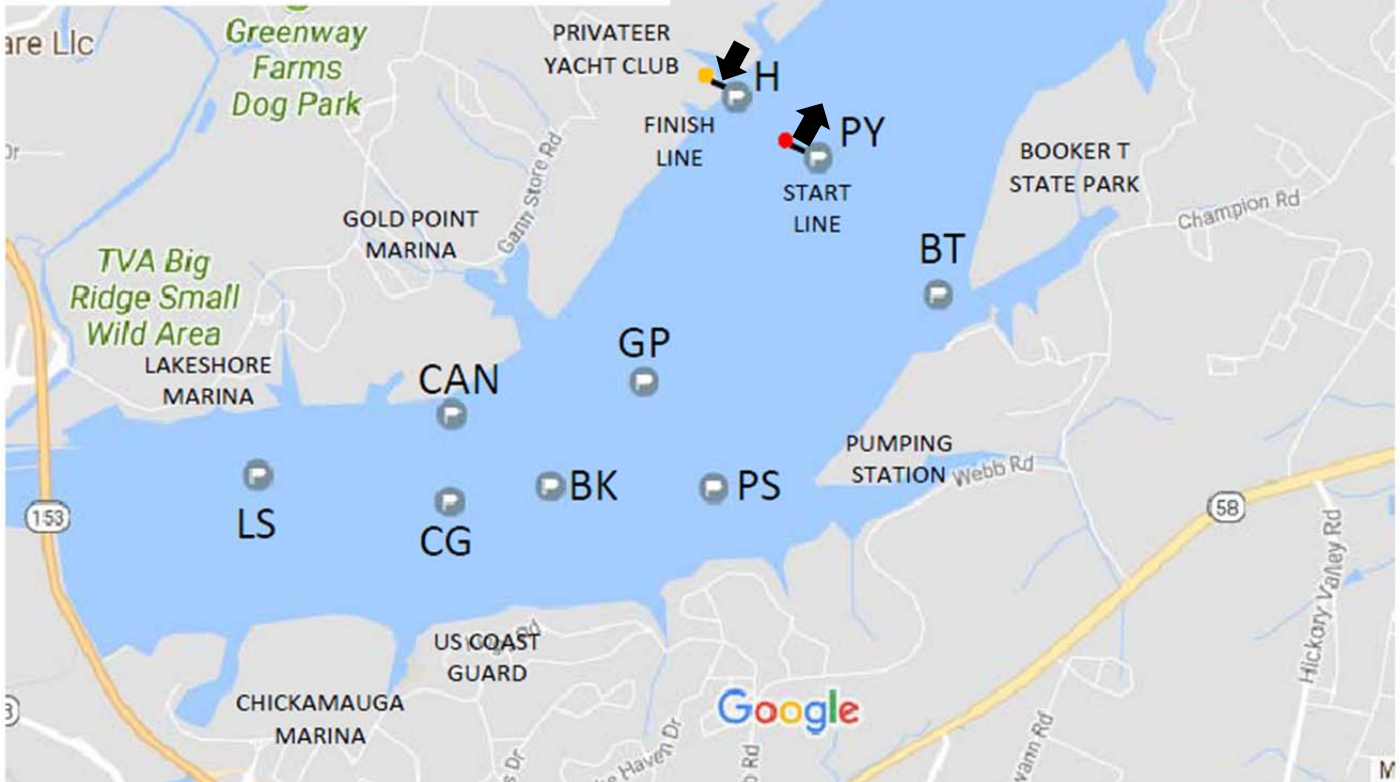
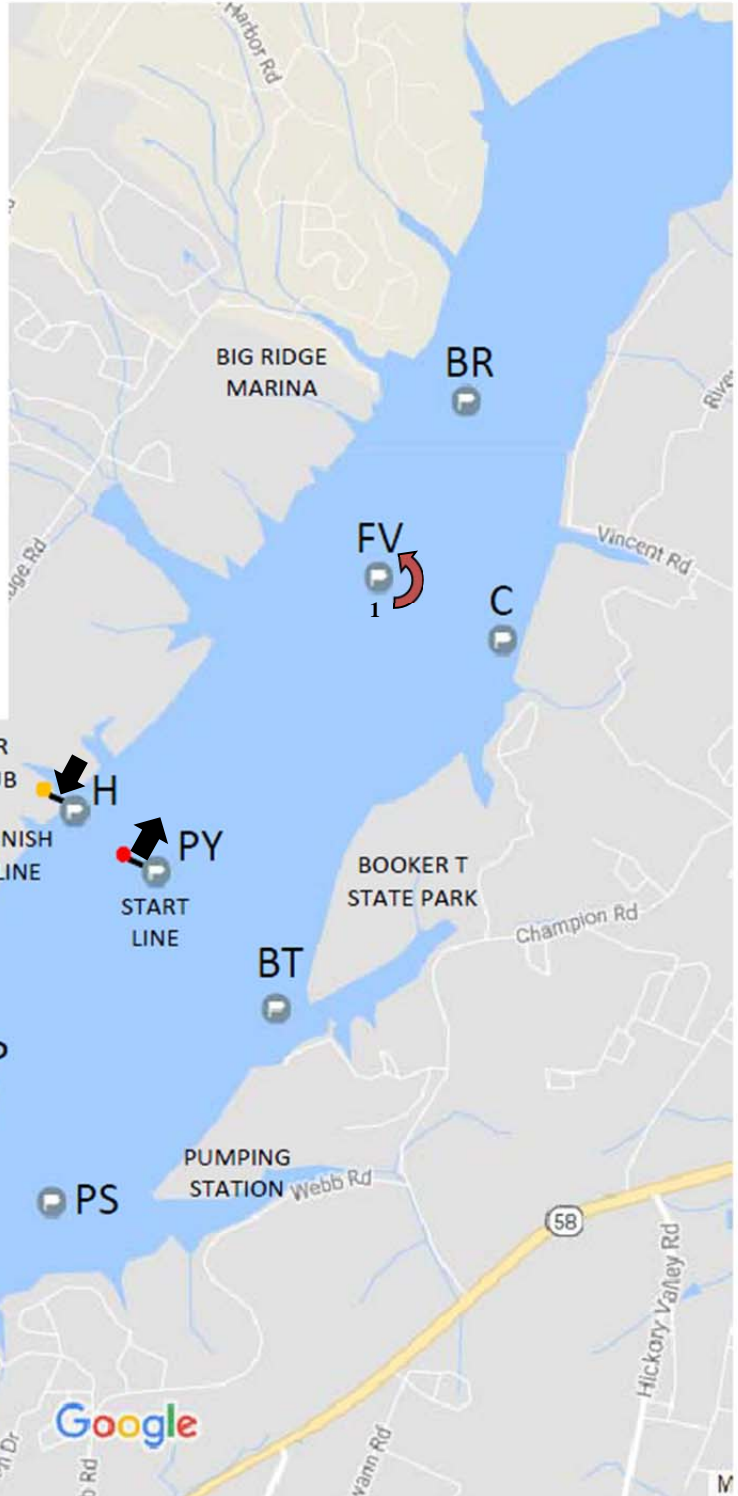
COURSE 2

PY-FV-H

2.024 Nautical Miles

MARKS OF THE COURSE

- BK – BLINKER (DAY MARK)
- BR – BIG RIDGE NUN
- BT – BOOKER T MARK
- C – CASTLE MARK
- CG – COAST GUARD NUN
- FV – FAIRVIEW NUN
- GP – GOLD POINT NUN
- H – HARBOR CAN
- LS – LAKESHORE NUN
- PS – PUMPING STATION MARK
- PY – PYC NUN



PHRF TIME ON DISTANCE PURSUIT RACE		
Course 2 - Start Times	PY-FV-H	
DISTANCE	2.024	
Scratch Boat ET	558.624	
BOAT	PHRF	Start
Catalina 22 NS	276	:00
Catalina 22, Rainbow 24 NS	270	:12
Morgan 22 NS, Oday 222	264	:24
Hunter 23.5 NS	261	:30
Cal 24 NS, Oday 25 NS	255	:43
Rainbow 24	252	:49
Jeanneau Sonic 23 NS	246	1:01
Morgan 22	243	1:07
Oday 28 NS	240	1:13
Catalina 310 WK NS	231	1:31
S2 6.9 NS	228	1:37
Pearson 28 NS, Ericson 28 NS	219	1:55
Oday 28 IB NS, Ranger 26 NS	216	2:01
S2 6.9	210	2:14
San Juan 28 NS	207	2:20
Oday 28 IB	204	2:26
Freedom 30 NS, Holder 20 NS	201	2:32
Ranger Fun 23 NS, C&C 27-3 OB NS	198	2:38
J22 NS, S2 7.9 IB NS, Pearson 28, Ericson 28	192	2:50
Merit 25 NS	189	2:56
J24 NS, S2 7.9 OB NS, San Juan 28	186	3:02
Wavelength 24 NS, Holder 20	183	3:08
Ranger Fun 23	180	3:14
C&C 27-3 OB, Catalina 310 WK	177	3:20
J22, S2 7.9 IB	174	3:26
Merit 25	171	3:33
J24, S2 7.9 OB	168	3:39
J32 SD NS	165	3:45
Wavelength 24, Toufinou 8 NS	162	3:51
Impulse 26 OB NS	150	4:15
J32 NS	147	4:21
J32 SD	141	4:33
Impulse 26 OB	135	4:45
J29 MHO NS, Toufinou 8, Seascope 24 NS	132	4:51
Melges 24 NS, J32, J92S NS	123	5:10
J29 MHO, Corsair F24 MKII NS	111	5:34
Seascope 24	102	5:52
Melges 24, J92S	93	6:10
Corsair F24 MKII	81	6:35

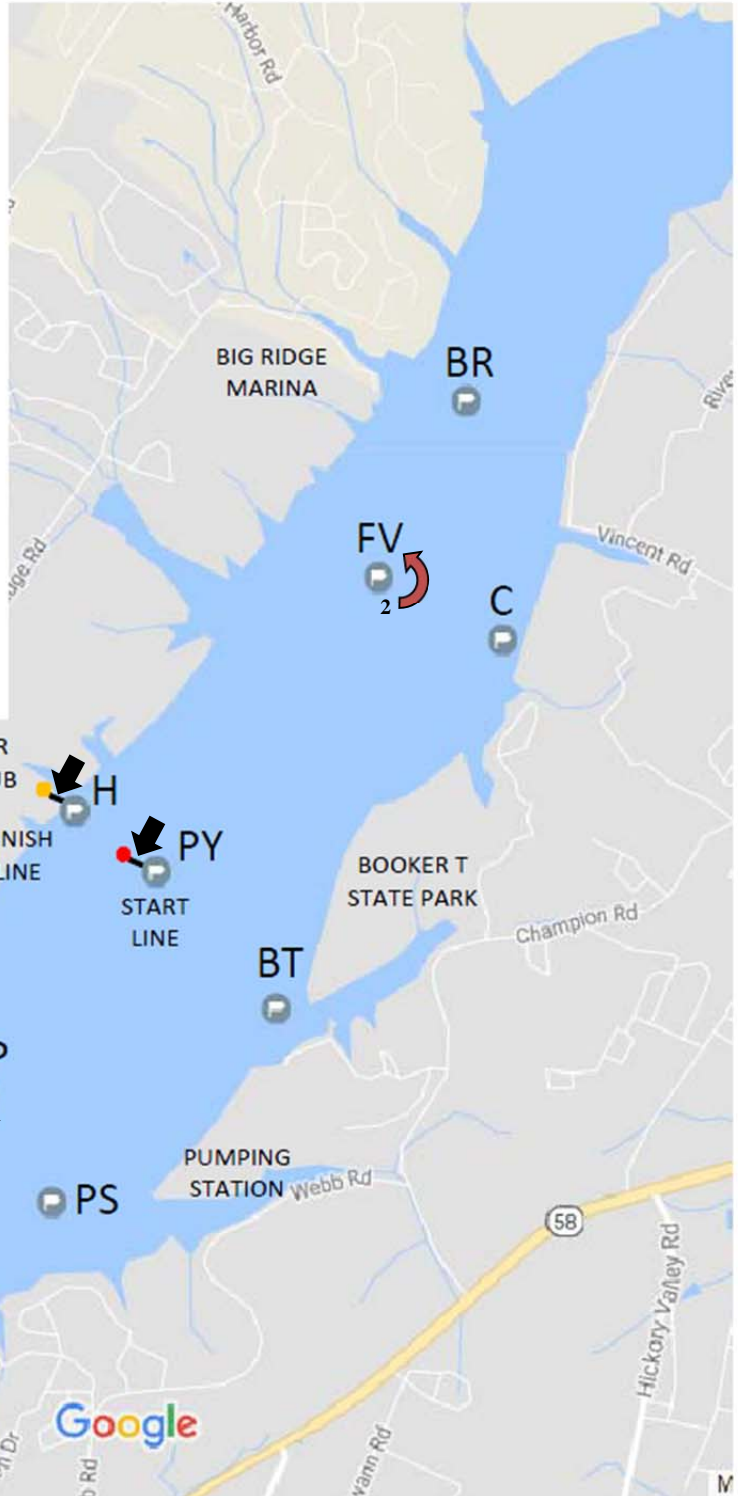
COURSE 3

PY-GP-FV-H

3.552 Nautical Miles

MARKS OF THE COURSE

- BK – BLINKER (DAY MARK)
- BR – BIG RIDGE NUN
- BT – BOOKER T MARK
- C – CASTLE MARK
- CG – COAST GUARD NUN
- FV – FAIRVIEW NUN
- GP – GOLD POINT NUN
- H – HARBOR CAN
- LS – LAKESHORE NUN
- PS – PUMPING STATION MARK
- PY – PYC NUN



PHRF TIME ON DISTANCE PURSUIT RACE		
Course 3 - Start Times	PY-GP-FV-H	
DISTANCE	3.552	
Scratch Boat ET	980.352	
BOAT	PHRF	Start
Catalina 22 NS	276	:00
Catalina 22, Rainbow 24 NS	270	:21
Morgan 22 NS, Oday 222	264	:43
Hunter 23.5 NS	261	:53
Cal 24 NS, Oday 25 NS	255	1:15
Rainbow 24	252	1:25
Jeanneau Sonic 23 NS	246	1:47
Morgan 22	243	1:57
Oday 28 NS	240	2:08
Catalina 310 WK NS	231	2:40
S2 6.9 NS	228	2:50
Pearson 28 NS, Ericson 28 NS	219	3:22
Oday 28 IB NS, Ranger 26 NS	216	3:33
S2 6.9	210	3:54
San Juan 28 NS	207	4:05
Oday 28 IB	204	4:16
Freedom 30 NS, Holder 20 NS	201	4:26
Ranger Fun 23 NS, C&C 27-3 OB NS	198	4:37
J22 NS, S2 7.9 IB NS, Pearson 28, Ericson 28	192	4:58
Merit 25 NS	189	5:09
J24 NS, S2 7.9 OB NS, San Juan 28	186	5:20
Wavelength 24 NS, Holder 20	183	5:30
Ranger Fun 23	180	5:41
C&C 27-3 OB, Catalina 310 WK	177	5:52
J22, S2 7.9 IB	174	6:02
Merit 25	171	6:13
J24, S2 7.9 OB	168	6:24
J32 SD NS	165	6:34
Wavelength 24, Toufinou 8 NS	162	6:45
Impulse 26 OB NS	150	7:28
J32 NS	147	7:38
J32 SD	141	8:00
Impulse 26 OB	135	8:21
J29 MHO NS, Toufinou 8, Seascope 24 NS	132	8:31
Melges 24 NS, J32, J92S NS	123	9:03
J29 MHO, Corsair F24 MKII NS	111	9:46
Seascope 24	102	10:18
Melges 24, J92S	93	10:50
Corsair F24 MKII	81	11:33

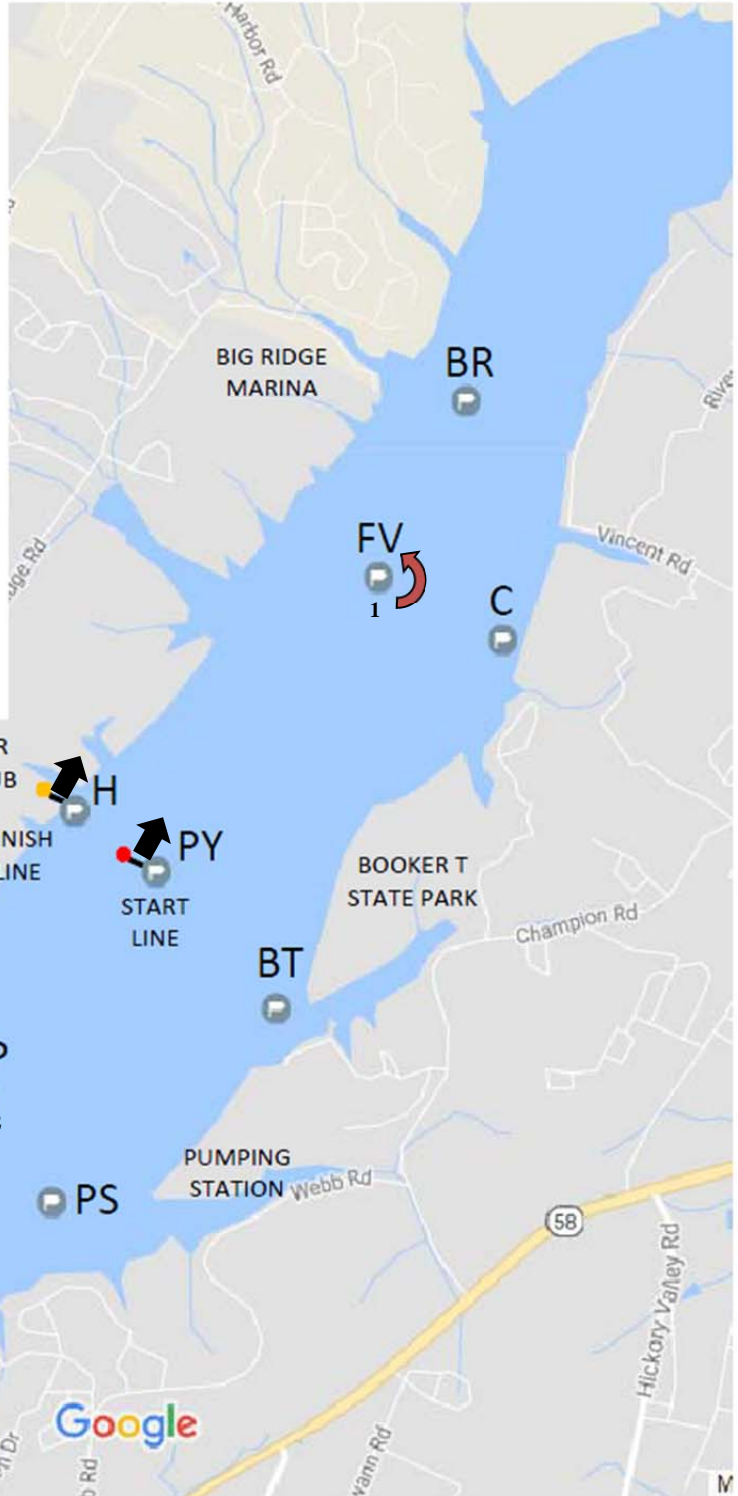
COURSE 4

PY-FV-GP-H

3.553 Nautical Miles

MARKS OF THE COURSE

- BK – BLINKER (DAY MARK)
- BR – BIG RIDGE NUN
- BT – BOOKER T MARK
- C – CASTLE MARK
- CG – COAST GUARD NUN
- FV – FAIRVIEW NUN
- GP – GOLD POINT NUN
- H – HARBOR CAN
- LS – LAKESHORE NUN
- PS – PUMPING STATION MARK
- PY – PYC NUN



PHRF TIME ON DISTANCE PURSUIT RACE		
Course 4 - Start Times	PY-FV-GP-H	
DISTANCE	3.553	
Scratch Boat ET	980.628	
BOAT	PHRF	Start
Catalina 22 NS	276	:00
Catalina 22, Rainbow 24 NS	270	:21
Morgan 22 NS, Oday 222	264	:43
Hunter 23.5 NS	261	:53
Cal 24 NS, Oday 25 NS	255	1:15
Rainbow 24	252	1:25
Jeanneau Sonic 23 NS	246	1:47
Morgan 22	243	1:57
Oday 28 NS	240	2:08
Catalina 310 WK NS	231	2:40
S2 6.9 NS	228	2:51
Pearson 28 NS, Ericson 28 NS	219	3:23
Oday 28 IB NS, Ranger 26 NS	216	3:33
S2 6.9	210	3:54
San Juan 28 NS	207	4:05
Oday 28 IB	204	4:16
Freedom 30 NS, Holder 20 NS	201	4:26
Ranger Fun 23 NS, C&C 27-3 OB NS	198	4:37
J22 NS, S2 7.9 IB NS, Pearson 28, Ericson 28	192	4:58
Merit 25 NS	189	5:09
J24 NS, S2 7.9 OB NS, San Juan 28	186	5:20
Wavelength 24 NS, Holder 20	183	5:30
Ranger Fun 23	180	5:41
C&C 27-3 OB, Catalina 310 WK	177	5:52
J22, S2 7.9 IB	174	6:02
Merit 25	171	6:13
J24, S2 7.9 OB	168	6:24
J32 SD NS	165	6:34
Wavelength 24, Toufinou 8 NS	162	6:45
Impulse 26 OB NS	150	7:28
J32 NS	147	7:38
J32 SD	141	8:00
Impulse 26 OB	135	8:21
J29 MHO NS, Toufinou 8, Seascope 24 NS	132	8:32
Melges 24 NS, J32, J92S NS	123	9:04
J29 MHO, Corsair F24 MKII NS	111	9:46
Seascope 24	102	10:18
Melges 24, J92S	93	10:50
Corsair F24 MKII	81	11:33

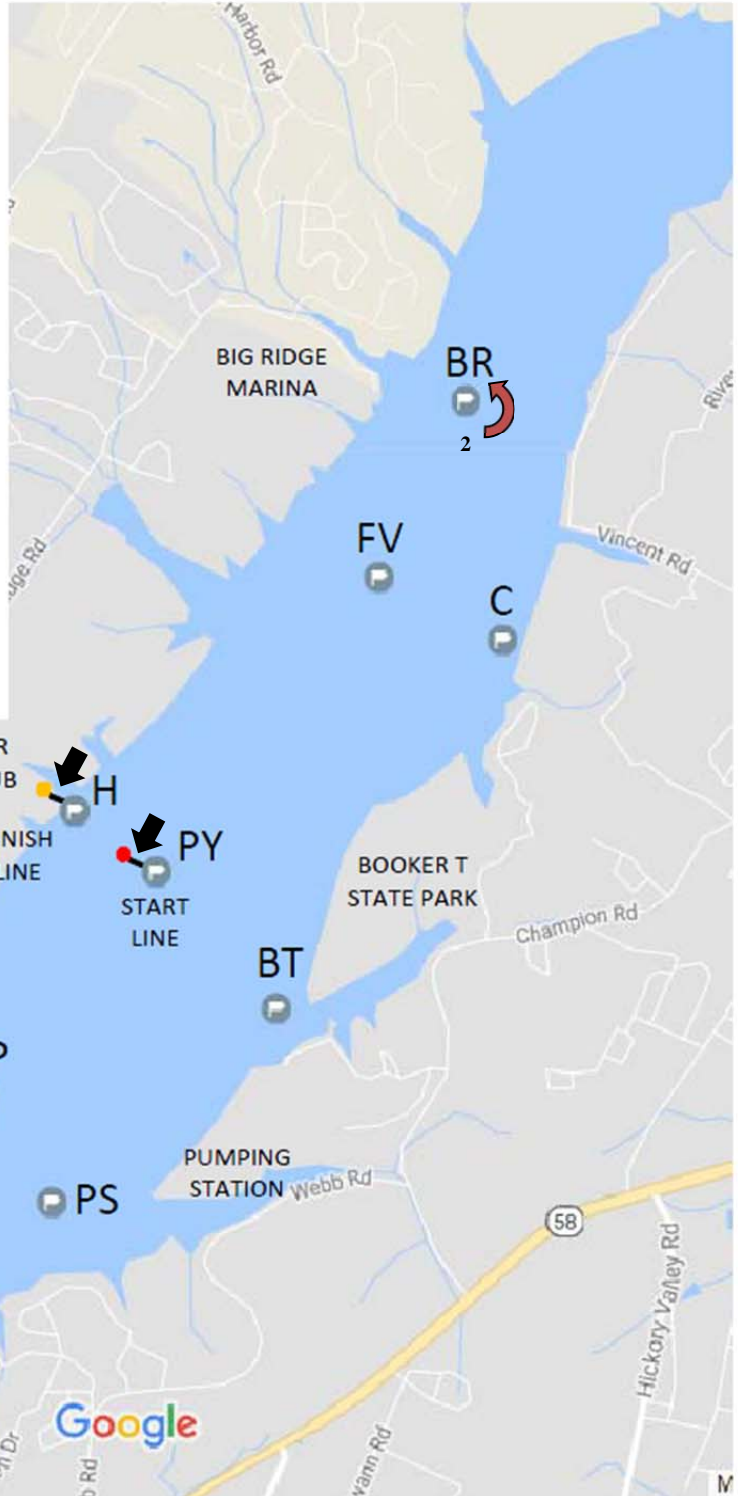
COURSE 5

PY-GP-BR-H

4.567 Nautical Miles

MARKS OF THE COURSE

- BK – BLINKER (DAY MARK)
- BR – BIG RIDGE NUN
- BT – BOOKER T MARK
- C – CASTLE MARK
- CG – COAST GUARD NUN
- FV – FAIRVIEW NUN
- GP – GOLD POINT NUN
- H – HARBOR CAN
- LS – LAKESHORE NUN
- PS – PUMPING STATION MARK
- PY – PYC NUN



PHRF TIME ON DISTANCE PURSUIT RACE		
Course 5 - Start Times	PY-GP-BR-H	
DISTANCE	4.567	
Scratch Boat ET	1260.492	
BOAT	PHRF	Start
Catalina 22 NS	276	:00
Catalina 22, Rainbow 24 NS	270	:27
Morgan 22 NS, Oday 222	264	:55
Hunter 23.5 NS	261	1:09
Cal 24 NS, Oday 25 NS	255	1:36
Rainbow 24	252	1:50
Jeanneau Sonic 23 NS	246	2:17
Morgan 22	243	2:31
Oday 28 NS	240	2:44
Catalina 310 WK NS	231	3:26
S2 6.9 NS	228	3:39
Pearson 28 NS, Ericson 28 NS	219	4:20
Oday 28 IB NS, Ranger 26 NS	216	4:34
S2 6.9	210	5:01
San Juan 28 NS	207	5:15
Oday 28 IB	204	5:29
Freedom 30 NS, Holder 20 NS	201	5:43
Ranger Fun 23 NS, C&C 27-3 OB NS	198	5:56
J22 NS, S2 7.9 IB NS, Pearson 28, Ericson 28	192	6:24
Merit 25 NS	189	6:37
J24 NS, S2 7.9 OB NS, San Juan 28	186	6:51
Wavelength 24 NS, Holder 20	183	7:05
Ranger Fun 23	180	7:18
C&C 27-3 OB, Catalina 310 WK	177	7:32
J22, S2 7.9 IB	174	7:46
Merit 25	171	8:00
J24, S2 7.9 OB	168	8:13
J32 SD NS	165	8:27
Wavelength 24, Toufinou 8 NS	162	8:41
Impulse 26 OB NS	150	9:35
J32 NS	147	9:49
J32 SD	141	10:17
Impulse 26 OB	135	10:44
J29 MHO NS, Toufinou 8, Seascope 24 NS	132	10:58
Melges 24 NS, J32, J92S NS	123	11:39
J29 MHO, Corsair F24 MKII NS	111	12:34
Seascope 24	102	13:15
Melges 24, J92S	93	13:56
Corsair F24 MKII	81	14:51

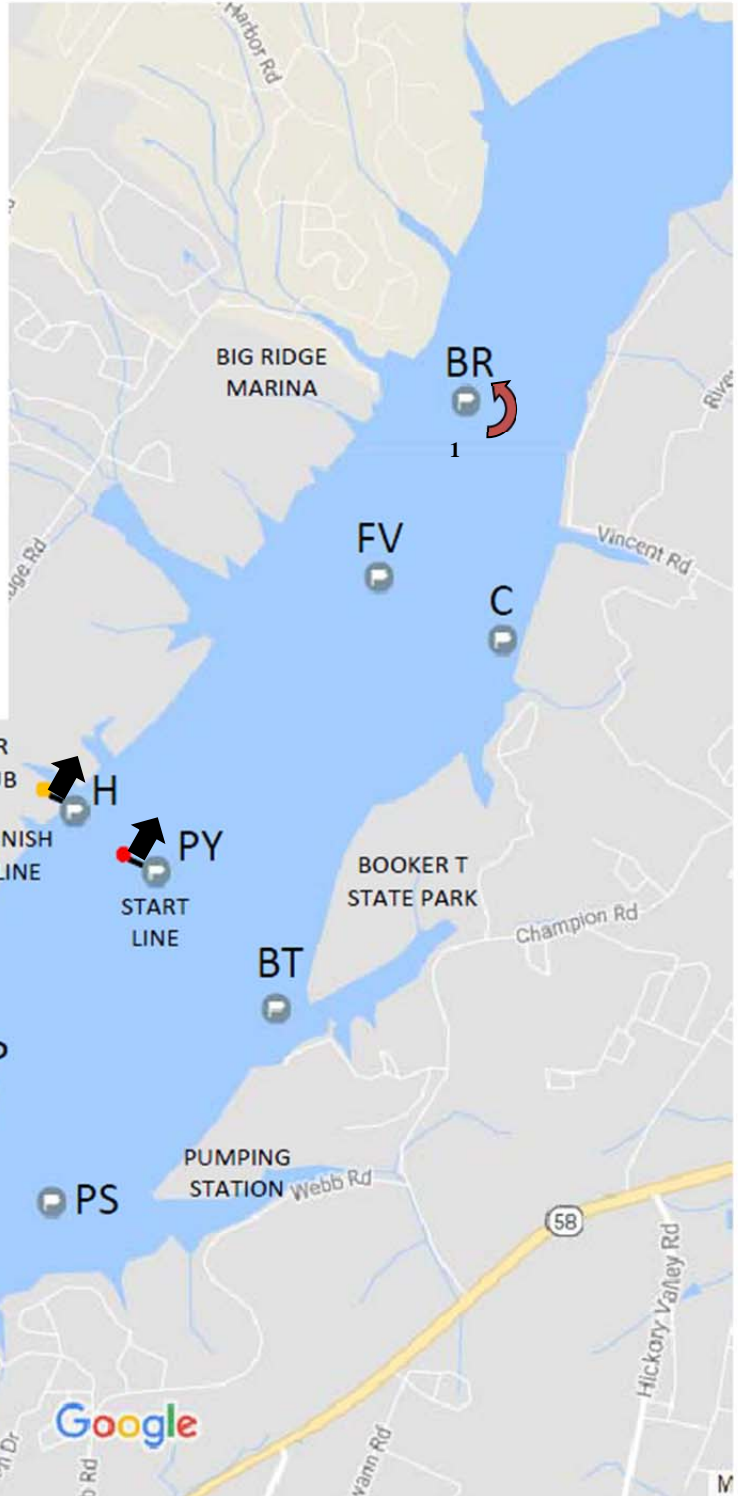
COURSE 6

PY-BR-GP-H

4.599 Nautical Miles

MARKS OF THE COURSE

- BK – BLINKER (DAY MARK)
- BR – BIG RIDGE NUN
- BT – BOOKER T MARK
- C – CASTLE MARK
- CG – COAST GUARD NUN
- FV – FAIRVIEW NUN
- GP – GOLD POINT NUN
- H – HARBOR CAN
- LS – LAKESHORE NUN
- PS – PUMPING STATION MARK
- PY – PYC NUN



PHRF TIME ON DISTANCE PURSUIT RACE		
Course 6 - Start Times	PY-BR-GP-H	
DISTANCE	4.599	
Scratch Boat ET	1269.324	
BOAT	PHRF	Start
Catalina 22 NS	276	:00
Catalina 22, Rainbow 24 NS	270	:28
Morgan 22 NS, Oday 222	264	:55
Hunter 23.5 NS	261	1:09
Cal 24 NS, Oday 25 NS	255	1:37
Rainbow 24	252	1:50
Jeanneau Sonic 23 NS	246	2:18
Morgan 22	243	2:32
Oday 28 NS	240	2:46
Catalina 310 WK NS	231	3:27
S2 6.9 NS	228	3:41
Pearson 28 NS, Ericson 28 NS	219	4:22
Oday 28 IB NS, Ranger 26 NS	216	4:36
S2 6.9	210	5:04
San Juan 28 NS	207	5:17
Oday 28 IB	204	5:31
Freedom 30 NS, Holder 20 NS	201	5:45
Ranger Fun 23 NS, C&C 27-3 OB NS	198	5:59
J22 NS, S2 7.9 IB NS, Pearson 28, Ericson 28	192	6:26
Merit 25 NS	189	6:40
J24 NS, S2 7.9 OB NS, San Juan 28	186	6:54
Wavelength 24 NS, Holder 20	183	7:08
Ranger Fun 23	180	7:22
C&C 27-3 OB, Catalina 310 WK	177	7:35
J22, S2 7.9 IB	174	7:49
Merit 25	171	8:03
J24, S2 7.9 OB	168	8:17
J32 SD NS	165	8:30
Wavelength 24, Toufinou 8 NS	162	8:44
Impulse 26 OB NS	150	9:39
J32 NS	147	9:53
J32 SD	141	10:21
Impulse 26 OB	135	10:48
J29 MHO NS, Toufinou 8, Seascope 24 NS	132	11:02
Melges 24 NS, J32, J92S NS	123	11:44
J29 MHO, Corsair F24 MKII NS	111	12:39
Seascope 24	102	13:20
Melges 24, J92S	93	14:02
Corsair F24 MKII	81	14:57

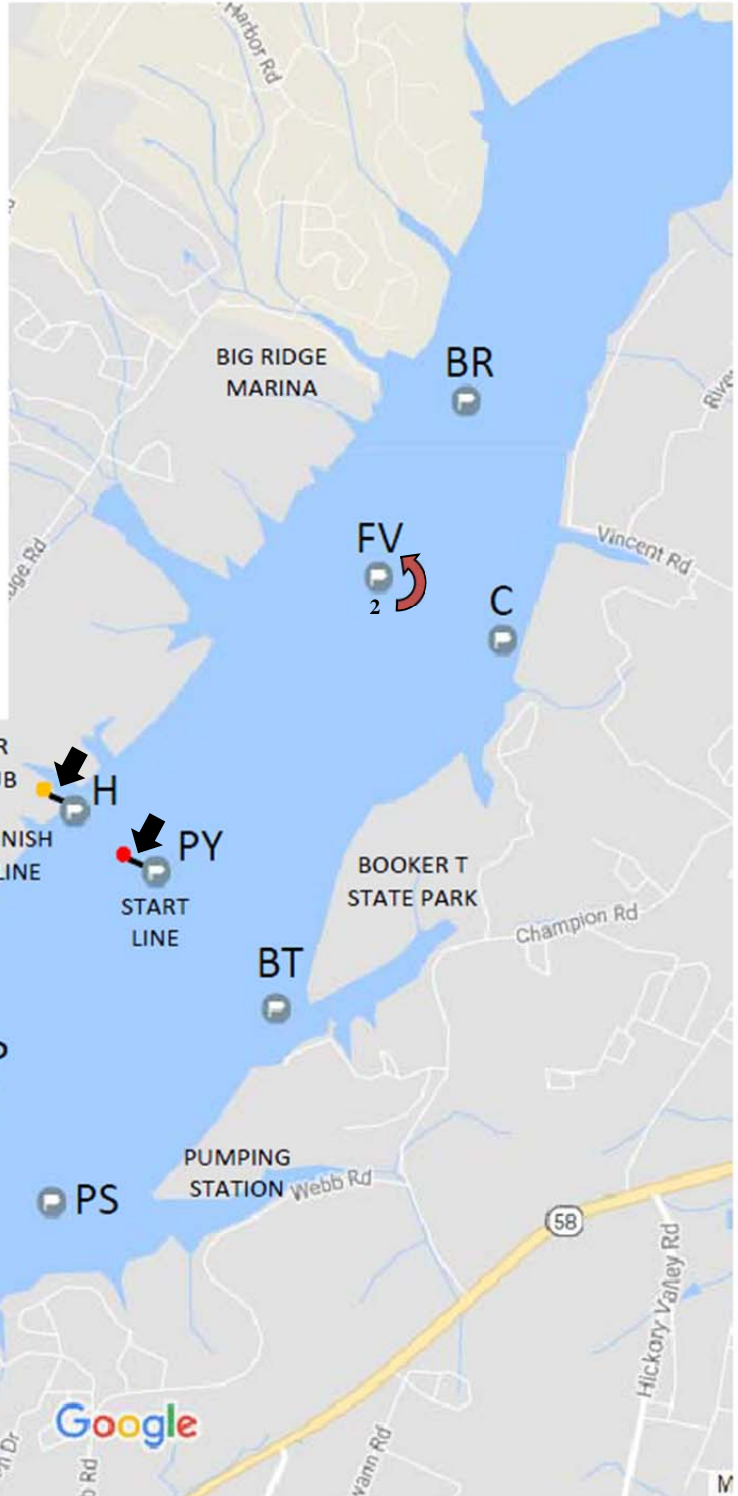
COURSE 7

PY-CG-FV-H

4.717 Nautical Miles

MARKS OF THE COURSE

- BK – BLINKER (DAY MARK)
- BR – BIG RIDGE NUN
- BT – BOOKER T MARK
- C – CASTLE MARK
- CG – COAST GUARD NUN
- FV – FAIRVIEW NUN
- GP – GOLD POINT NUN
- H – HARBOR CAN
- LS – LAKESHORE NUN
- PS – PUMPING STATION MARK
- PY – PYC NUN



PHRF TIME ON DISTANCE PURSUIT RACE		
Course 7 - Start Times	PY-CG-FV-H	
DISTANCE	4.717	
Scratch Boat ET	1301.892	
BOAT	PHRF	Start
Catalina 22 NS	276	:00
Catalina 22, Rainbow 24 NS	270	:28
Morgan 22 NS, Oday 222	264	:57
Hunter 23.5 NS	261	1:11
Cal 24 NS, Oday 25 NS	255	1:39
Rainbow 24	252	1:53
Jeanneau Sonic 23 NS	246	2:22
Morgan 22	243	2:36
Oday 28 NS	240	2:50
Catalina 310 WK NS	231	3:32
S2 6.9 NS	228	3:46
Pearson 28 NS, Ericson 28 NS	219	4:29
Oday 28 IB NS, Ranger 26 NS	216	4:43
S2 6.9	210	5:11
San Juan 28 NS	207	5:25
Oday 28 IB	204	5:40
Freedom 30 NS, Holder 20 NS	201	5:54
Ranger Fun 23 NS, C&C 27-3 OB NS	198	6:08
J22 NS, S2 7.9 IB NS, Pearson 28, Ericson 28	192	6:36
Merit 25 NS	189	6:50
J24 NS, S2 7.9 OB NS, San Juan 28	186	7:05
Wavelength 24 NS, Holder 20	183	7:19
Ranger Fun 23	180	7:33
C&C 27-3 OB, Catalina 310 WK	177	7:47
J22, S2 7.9 IB	174	8:01
Merit 25	171	8:15
J24, S2 7.9 OB	168	8:29
J32 SD NS	165	8:44
Wavelength 24, Toufinou 8 NS	162	8:58
Impulse 26 OB NS	150	9:54
J32 NS	147	10:08
J32 SD	141	10:37
Impulse 26 OB	135	11:05
J29 MHO NS, Toufinou 8, Seascope 24 NS	132	11:19
Melges 24 NS, J32, J92S NS	123	12:02
J29 MHO, Corsair F24 MKII NS	111	12:58
Seascope 24	102	13:41
Melges 24, J92S	93	14:23
Corsair F24 MKII	81	15:20

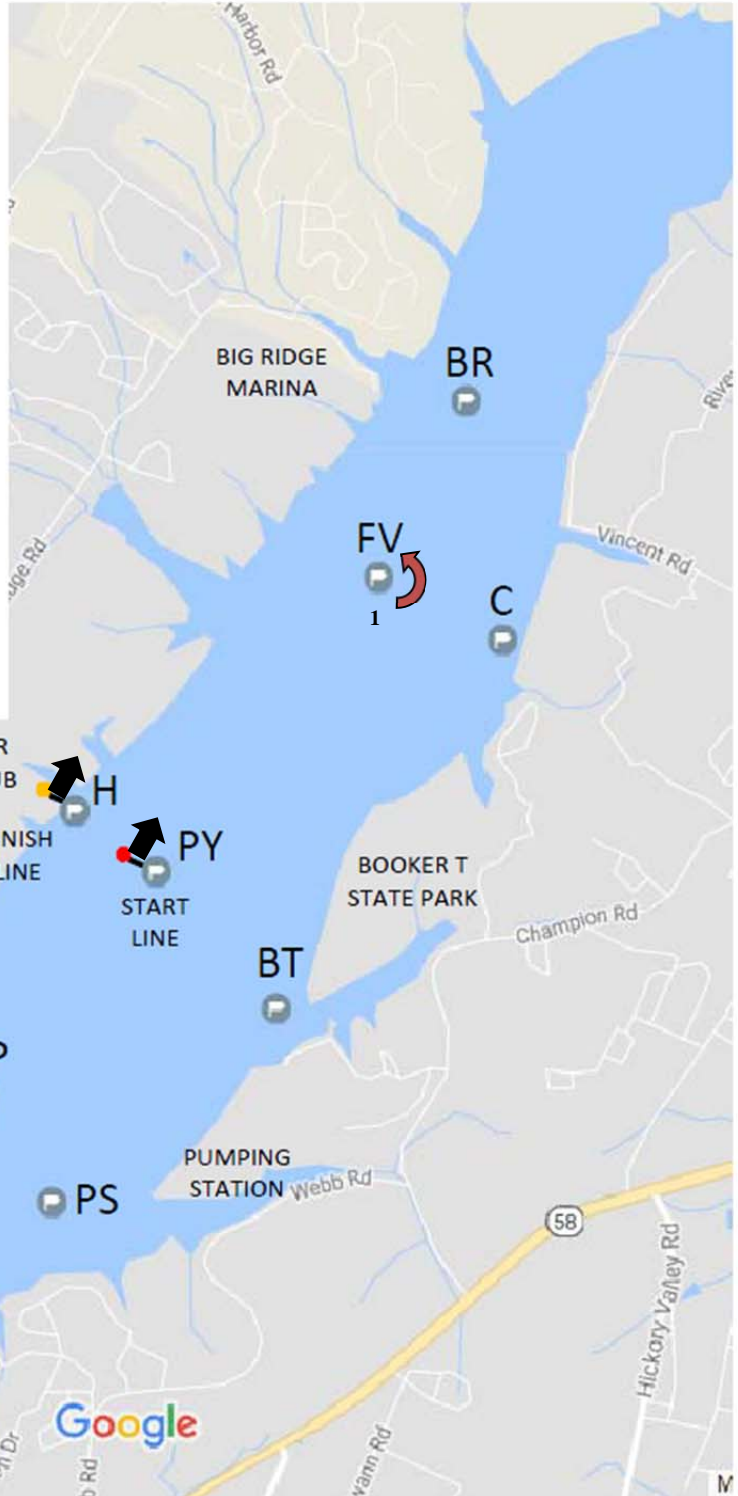
COURSE 8

PY-FV-CG-H

4.625 Nautical Miles

MARKS OF THE COURSE

- BK – BLINKER (DAY MARK)
- BR – BIG RIDGE NUN
- BT – BOOKER T MARK
- C – CASTLE MARK
- CG – COAST GUARD NUN
- FV – FAIRVIEW NUN
- GP – GOLD POINT NUN
- H – HARBOR CAN
- LS – LAKESHORE NUN
- PS – PUMPING STATION MARK
- PY – PYC NUN



PHRF TIME ON DISTANCE PURSUIT RACE		
Course 8 - Start Times	PY-FV-CG-H	
DISTANCE	4.625	
Scratch Boat ET	1276.5	
BOAT	PHRF	Start
Catalina 22 NS	276	:00
Catalina 22, Rainbow 24 NS	270	:28
Morgan 22 NS, Oday 222	264	:56
Hunter 23.5 NS	261	1:09
Cal 24 NS, Oday 25 NS	255	1:37
Rainbow 24	252	1:51
Jeanneau Sonic 23 NS	246	2:19
Morgan 22	243	2:33
Oday 28 NS	240	2:46
Catalina 310 WK NS	231	3:28
S2 6.9 NS	228	3:42
Pearson 28 NS, Ericson 28 NS	219	4:24
Oday 28 IB NS, Ranger 26 NS	216	4:37
S2 6.9	210	5:05
San Juan 28 NS	207	5:19
Oday 28 IB	204	5:33
Freedom 30 NS, Holder 20 NS	201	5:47
Ranger Fun 23 NS, C&C 27-3 OB NS	198	6:01
J22 NS, S2 7.9 IB NS, Pearson 28, Ericson 28	192	6:29
Merit 25 NS	189	6:42
J24 NS, S2 7.9 OB NS, San Juan 28	186	6:56
Wavelength 24 NS, Holder 20	183	7:10
Ranger Fun 23	180	7:24
C&C 27-3 OB, Catalina 310 WK	177	7:38
J22, S2 7.9 IB	174	7:52
Merit 25	171	8:06
J24, S2 7.9 OB	168	8:20
J32 SD NS	165	8:33
Wavelength 24, Toufinou 8 NS	162	8:47
Impulse 26 OB NS	150	9:43
J32 NS	147	9:57
J32 SD	141	10:24
Impulse 26 OB	135	10:52
J29 MHO NS, Toufinou 8, Seascope 24 NS	132	11:06
Melges 24 NS, J32, J92S NS	123	11:48
J29 MHO, Corsair F24 MKII NS	111	12:43
Seascope 24	102	13:25
Melges 24, J92S	93	14:06
Corsair F24 MKII	81	15:02

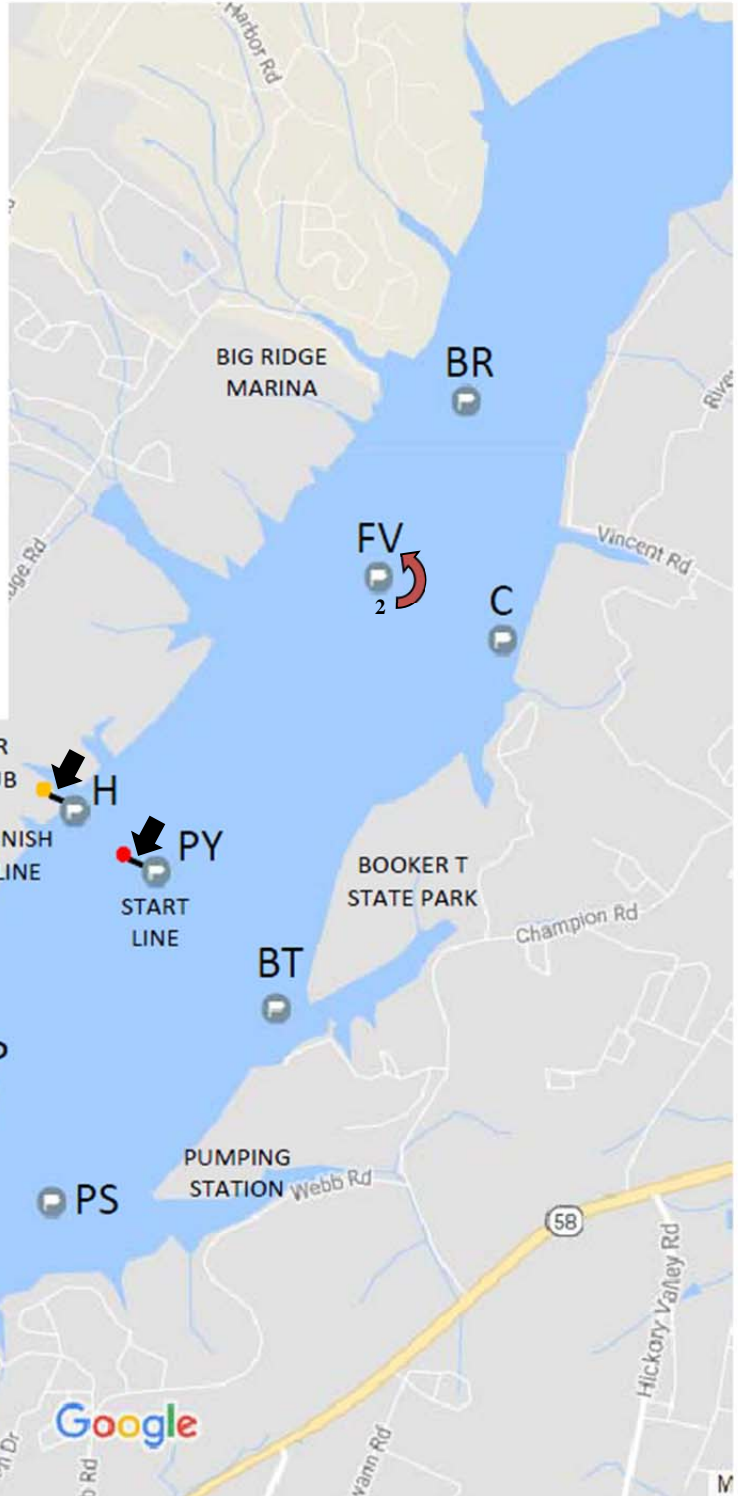
COURSE 9

PY-LS-FV-H

5.494 Nautical Miles

MARKS OF THE COURSE

- BK – BLINKER (DAY MARK)
- BR – BIG RIDGE NUN
- BT – BOOKER T MARK
- C – CASTLE MARK
- CG – COAST GUARD NUN
- FV – FAIRVIEW NUN
- GP – GOLD POINT NUN
- H – HARBOR CAN
- LS – LAKESHORE NUN
- PS – PUMPING STATION MARK
- PY – PYC NUN



PHRF TIME ON DISTANCE PURSUIT RACE		
Course 9 - Start Times	PY-LS-FV-H	
DISTANCE	5.494	
Scratch Boat ET	1516.344	
BOAT	PHRF	Start
Catalina 22 NS	276	:00
Catalina 22, Rainbow 24 NS	270	:33
Morgan 22 NS, Oday 222	264	1:06
Hunter 23.5 NS	261	1:22
Cal 24 NS, Oday 25 NS	255	1:55
Rainbow 24	252	2:12
Jeanneau Sonic 23 NS	246	2:45
Morgan 22	243	3:01
Oday 28 NS	240	3:18
Catalina 310 WK NS	231	4:07
S2 6.9 NS	228	4:24
Pearson 28 NS, Ericson 28 NS	219	5:13
Oday 28 IB NS, Ranger 26 NS	216	5:30
S2 6.9	210	6:03
San Juan 28 NS	207	6:19
Oday 28 IB	204	6:36
Freedom 30 NS, Holder 20 NS	201	6:52
Ranger Fun 23 NS, C&C 27-3 OB NS	198	7:09
J22 NS, S2 7.9 IB NS, Pearson 28, Ericson 28	192	7:41
Merit 25 NS	189	7:58
J24 NS, S2 7.9 OB NS, San Juan 28	186	8:14
Wavelength 24 NS, Holder 20	183	8:31
Ranger Fun 23	180	8:47
C&C 27-3 OB, Catalina 310 WK	177	9:04
J22, S2 7.9 IB	174	9:20
Merit 25	171	9:37
J24, S2 7.9 OB	168	9:53
J32 SD NS	165	10:10
Wavelength 24, Toufinou 8 NS	162	10:26
Impulse 26 OB NS	150	11:32
J32 NS	147	11:49
J32 SD	141	12:22
Impulse 26 OB	135	12:55
J29 MHO NS, Toufinou 8, Seascope 24 NS	132	13:11
Melges 24 NS, J32, J92S NS	123	14:01
J29 MHO, Corsair F24 MKII NS	111	15:07
Seascope 24	102	15:56
Melges 24, J92S	93	16:45
Corsair F24 MKII	81	17:51

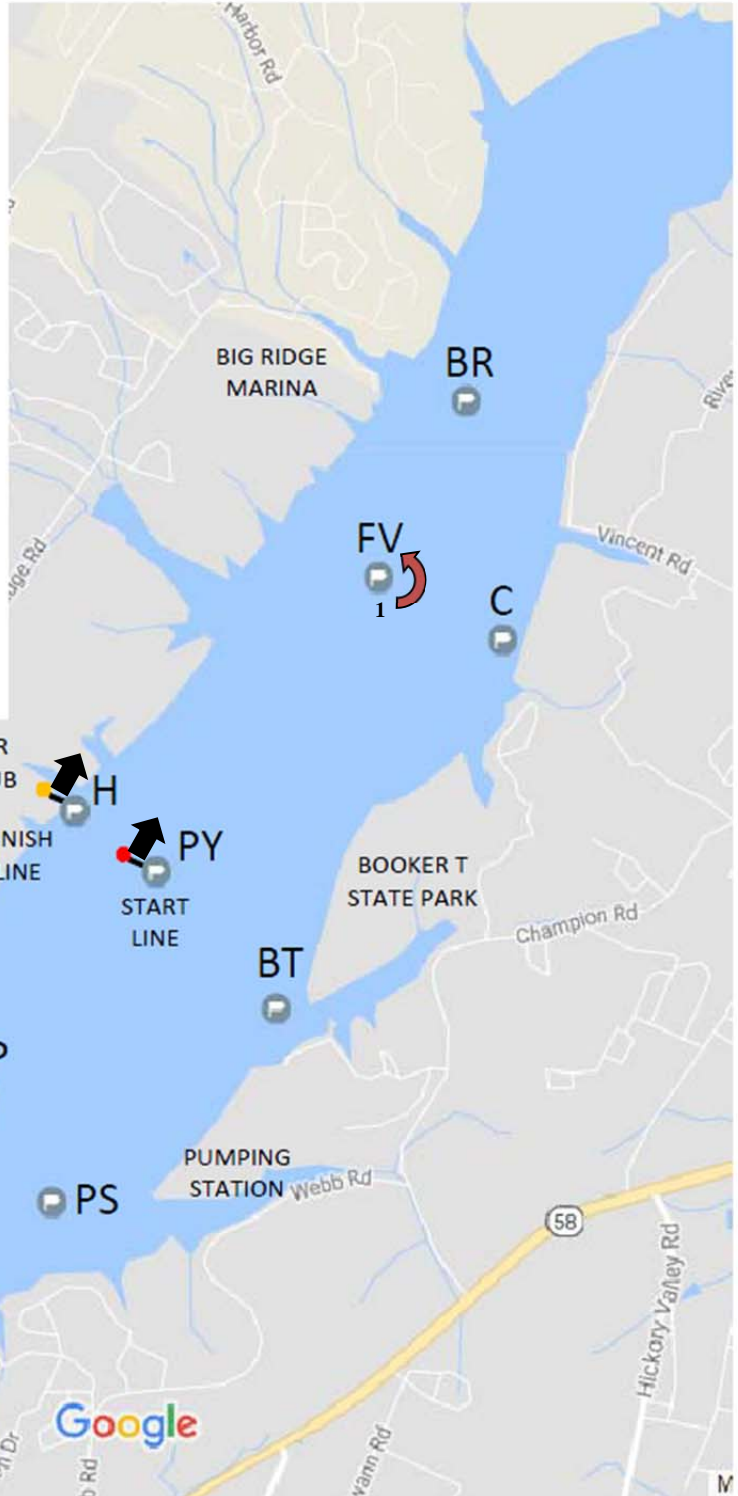
COURSE 10

PY-FV-LS-H

5.396 Nautical Miles

MARKS OF THE COURSE

- BK – BLINKER (DAY MARK)
- BR – BIG RIDGE NUN
- BT – BOOKER T MARK
- C – CASTLE MARK
- CG – COAST GUARD NUN
- FV – FAIRVIEW NUN
- GP – GOLD POINT NUN
- H – HARBOR CAN
- LS – LAKESHORE NUN
- PS – PUMPING STATION MARK
- PY – PYC NUN



PHRF TIME ON DISTANCE PURSUIT RACE		
Course 10 - Start Times	PY-FV-LS-H	
DISTANCE	5.396	
Scratch Boat ET	1489.296	
BOAT	PHRF	Start
Catalina 22 NS	276	:00
Catalina 22, Rainbow 24 NS	270	:32
Morgan 22 NS, Oday 222	264	1:05
Hunter 23.5 NS	261	1:21
Cal 24 NS, Oday 25 NS	255	1:53
Rainbow 24	252	2:10
Jeanneau Sonic 23 NS	246	2:42
Morgan 22	243	2:58
Oday 28 NS	240	3:14
Catalina 310 WK NS	231	4:03
S2 6.9 NS	228	4:19
Pearson 28 NS, Ericson 28 NS	219	5:08
Oday 28 IB NS, Ranger 26 NS	216	5:24
S2 6.9	210	5:56
San Juan 28 NS	207	6:12
Oday 28 IB	204	6:29
Freedom 30 NS, Holder 20 NS	201	6:45
Ranger Fun 23 NS, C&C 27-3 OB NS	198	7:01
J22 NS, S2 7.9 IB NS, Pearson 28, Ericson 28	192	7:33
Merit 25 NS	189	7:49
J24 NS, S2 7.9 OB NS, San Juan 28	186	8:06
Wavelength 24 NS, Holder 20	183	8:22
Ranger Fun 23	180	8:38
C&C 27-3 OB, Catalina 310 WK	177	8:54
J22, S2 7.9 IB	174	9:10
Merit 25	171	9:27
J24, S2 7.9 OB	168	9:43
J32 SD NS	165	9:59
Wavelength 24, Toufinou 8 NS	162	10:15
Impulse 26 OB NS	150	11:20
J32 NS	147	11:36
J32 SD	141	12:08
Impulse 26 OB	135	12:41
J29 MHO NS, Toufinou 8, Seascope 24 NS	132	12:57
Melges 24 NS, J32, J92S NS	123	13:46
J29 MHO, Corsair F24 MKII NS	111	14:50
Seascope 24	102	15:39
Melges 24, J92S	93	16:27
Corsair F24 MKII	81	17:32

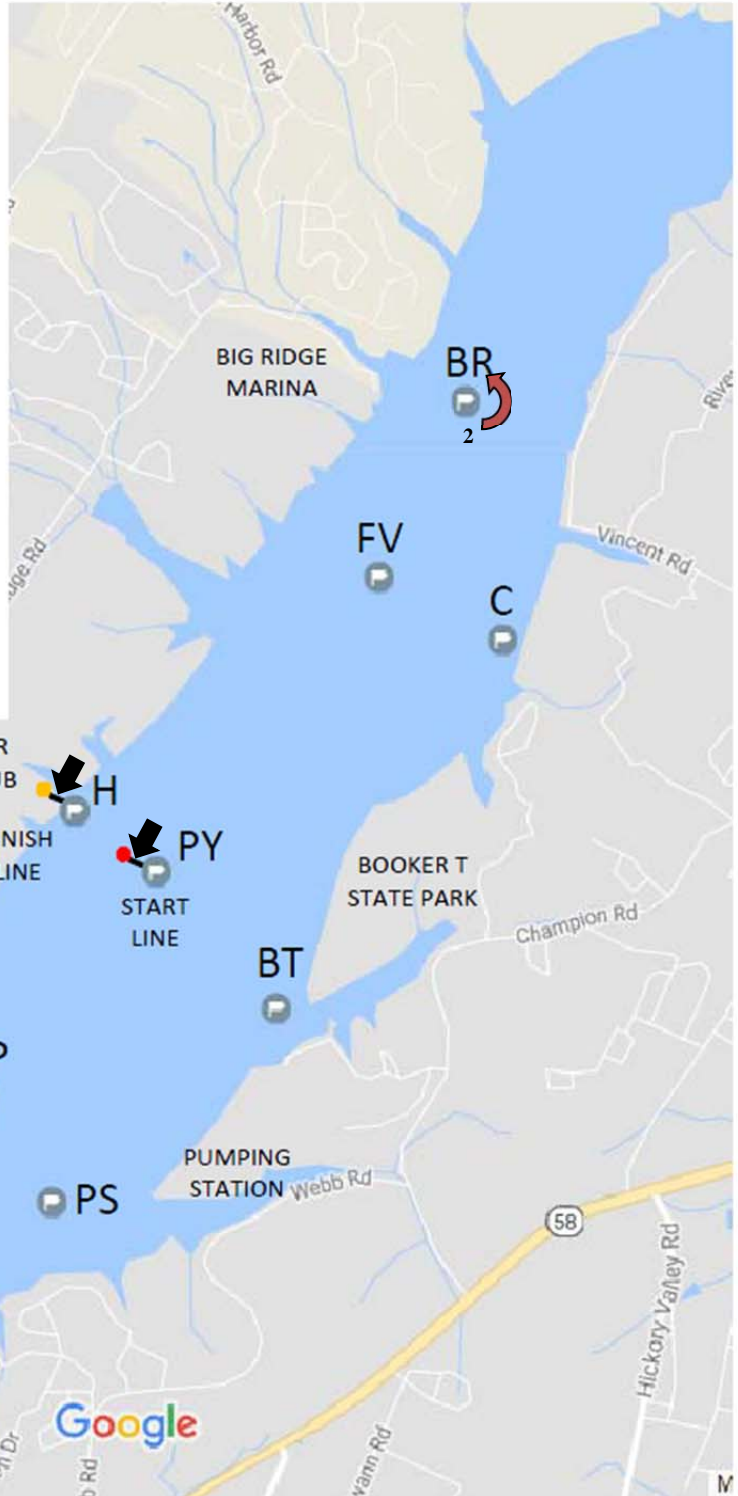
COURSE 11

PY-CG-BR-H

5.722 Nautical Miles

MARKS OF THE COURSE

- BK – BLINKER (DAY MARK)
- BR – BIG RIDGE NUN
- BT – BOOKER T MARK
- C – CASTLE MARK
- CG – COAST GUARD NUN
- FV – FAIRVIEW NUN
- GP – GOLD POINT NUN
- H – HARBOR CAN
- LS – LAKESHORE NUN
- PS – PUMPING STATION MARK
- PY – PYC NUN



PHRF TIME ON DISTANCE PURSUIT RACE		
Course 11 - Start Times	PY-CG-BR-H	
DISTANCE	5.722	
Scratch Boat ET	1579.272	
BOAT	PHRF	Start
Catalina 22 NS	276	:00
Catalina 22, Rainbow 24 NS	270	:34
Morgan 22 NS, Oday 222	264	1:09
Hunter 23.5 NS	261	1:26
Cal 24 NS, Oday 25 NS	255	2:00
Rainbow 24	252	2:17
Jeanneau Sonic 23 NS	246	2:52
Morgan 22	243	3:09
Oday 28 NS	240	3:26
Catalina 310 WK NS	231	4:17
S2 6.9 NS	228	4:35
Pearson 28 NS, Ericson 28 NS	219	5:26
Oday 28 IB NS, Ranger 26 NS	216	5:43
S2 6.9	210	6:18
San Juan 28 NS	207	6:35
Oday 28 IB	204	6:52
Freedom 30 NS, Holder 20 NS	201	7:09
Ranger Fun 23 NS, C&C 27-3 OB NS	198	7:26
J22 NS, S2 7.9 IB NS, Pearson 28, Ericson 28	192	8:01
Merit 25 NS	189	8:18
J24 NS, S2 7.9 OB NS, San Juan 28	186	8:35
Wavelength 24 NS, Holder 20	183	8:52
Ranger Fun 23	180	9:09
C&C 27-3 OB, Catalina 310 WK	177	9:26
J22, S2 7.9 IB	174	9:44
Merit 25	171	10:01
J24, S2 7.9 OB	168	10:18
J32 SD NS	165	10:35
Wavelength 24, Toufinou 8 NS	162	10:52
Impulse 26 OB NS	150	12:01
J32 NS	147	12:18
J32 SD	141	12:52
Impulse 26 OB	135	13:27
J29 MHO NS, Toufinou 8, Seascope 24 NS	132	13:44
Melges 24 NS, J32, J92S NS	123	14:35
J29 MHO, Corsair F24 MKII NS	111	15:44
Seascope 24	102	16:36
Melges 24, J92S	93	17:27
Corsair F24 MKII	81	18:36

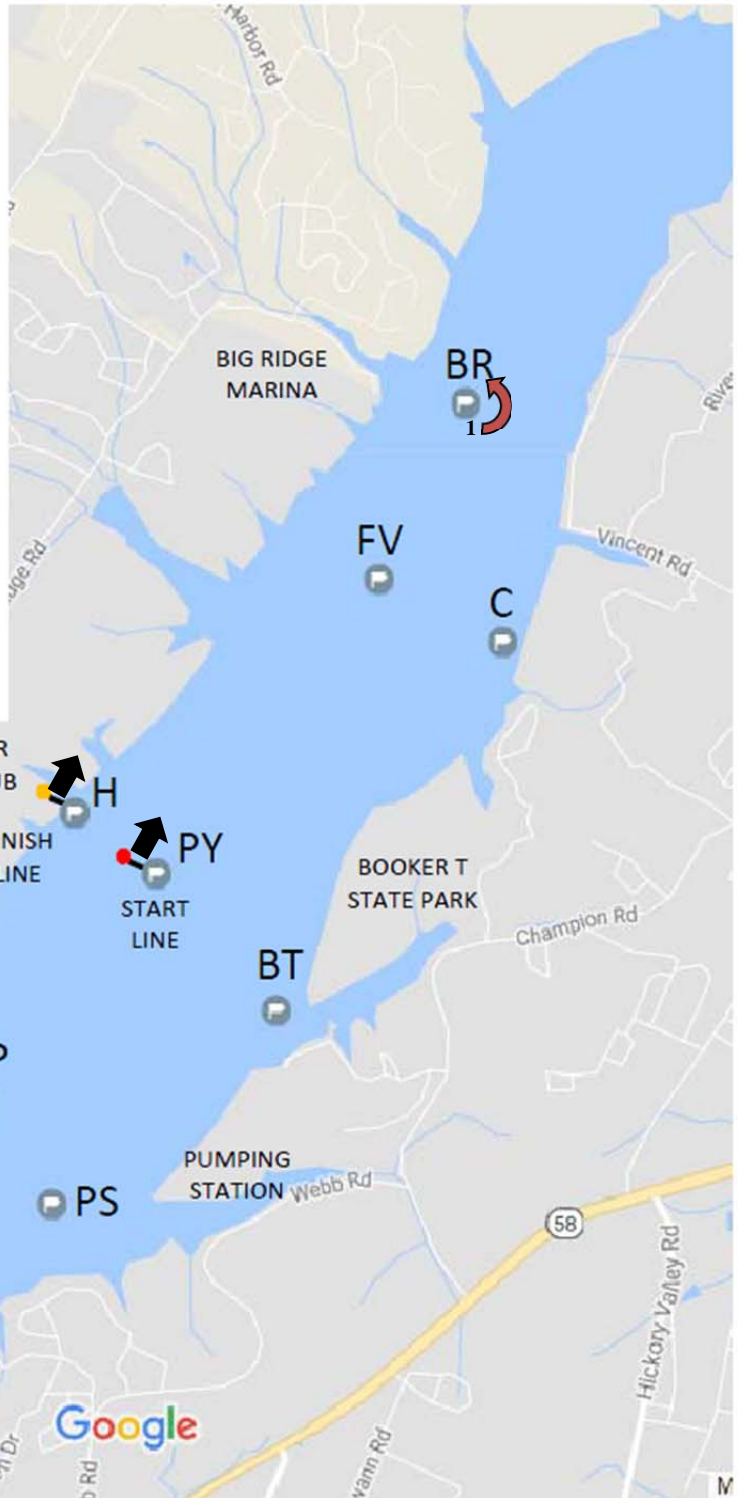
COURSE 12

PY-BR-CG-H

5.660 Nautical Miles

MARKS OF THE COURSE

- BK – BLINKER (DAY MARK)
- BR – BIG RIDGE NUN
- BT – BOOKER T MARK
- C – CASTLE MARK
- CG – COAST GUARD NUN
- FV – FAIRVIEW NUN
- GP – GOLD POINT NUN
- H – HARBOR CAN
- LS – LAKESHORE NUN
- PS – PUMPING STATION MARK
- PY – PYC NUN



PHRF TIME ON DISTANCE PURSUIT RACE		
Course 12 - Start Times	PY-BR-CG-H	
DISTANCE	5.66	
Scratch Boat ET	1562.16	
BOAT	PHRF	Start
Catalina 22 NS	276	:00
Catalina 22, Rainbow 24 NS	270	:34
Morgan 22 NS, Oday 222	264	1:08
Hunter 23.5 NS	261	1:25
Cal 24 NS, Oday 25 NS	255	1:59
Rainbow 24	252	2:16
Jeanneau Sonic 23 NS	246	2:50
Morgan 22	243	3:07
Oday 28 NS	240	3:24
Catalina 310 WK NS	231	4:15
S2 6.9 NS	228	4:32
Pearson 28 NS, Ericson 28 NS	219	5:23
Oday 28 IB NS, Ranger 26 NS	216	5:40
S2 6.9	210	6:14
San Juan 28 NS	207	6:31
Oday 28 IB	204	6:48
Freedom 30 NS, Holder 20 NS	201	7:04
Ranger Fun 23 NS, C&C 27-3 OB NS	198	7:21
J22 NS, S2 7.9 IB NS, Pearson 28, Ericson 28	192	7:55
Merit 25 NS	189	8:12
J24 NS, S2 7.9 OB NS, San Juan 28	186	8:29
Wavelength 24 NS, Holder 20	183	8:46
Ranger Fun 23	180	9:03
C&C 27-3 OB, Catalina 310 WK	177	9:20
J22, S2 7.9 IB	174	9:37
Merit 25	171	9:54
J24, S2 7.9 OB	168	10:11
J32 SD NS	165	10:28
Wavelength 24, Toufinou 8 NS	162	10:45
Impulse 26 OB NS	150	11:53
J32 NS	147	12:10
J32 SD	141	12:44
Impulse 26 OB	135	13:18
J29 MHO NS, Toufinou 8, Seascope 24 NS	132	13:35
Melges 24 NS, J32, J92S NS	123	14:26
J29 MHO, Corsair F24 MKII NS	111	15:34
Seascope 24	102	16:25
Melges 24, J92S	93	17:16
Corsair F24 MKII	81	18:24

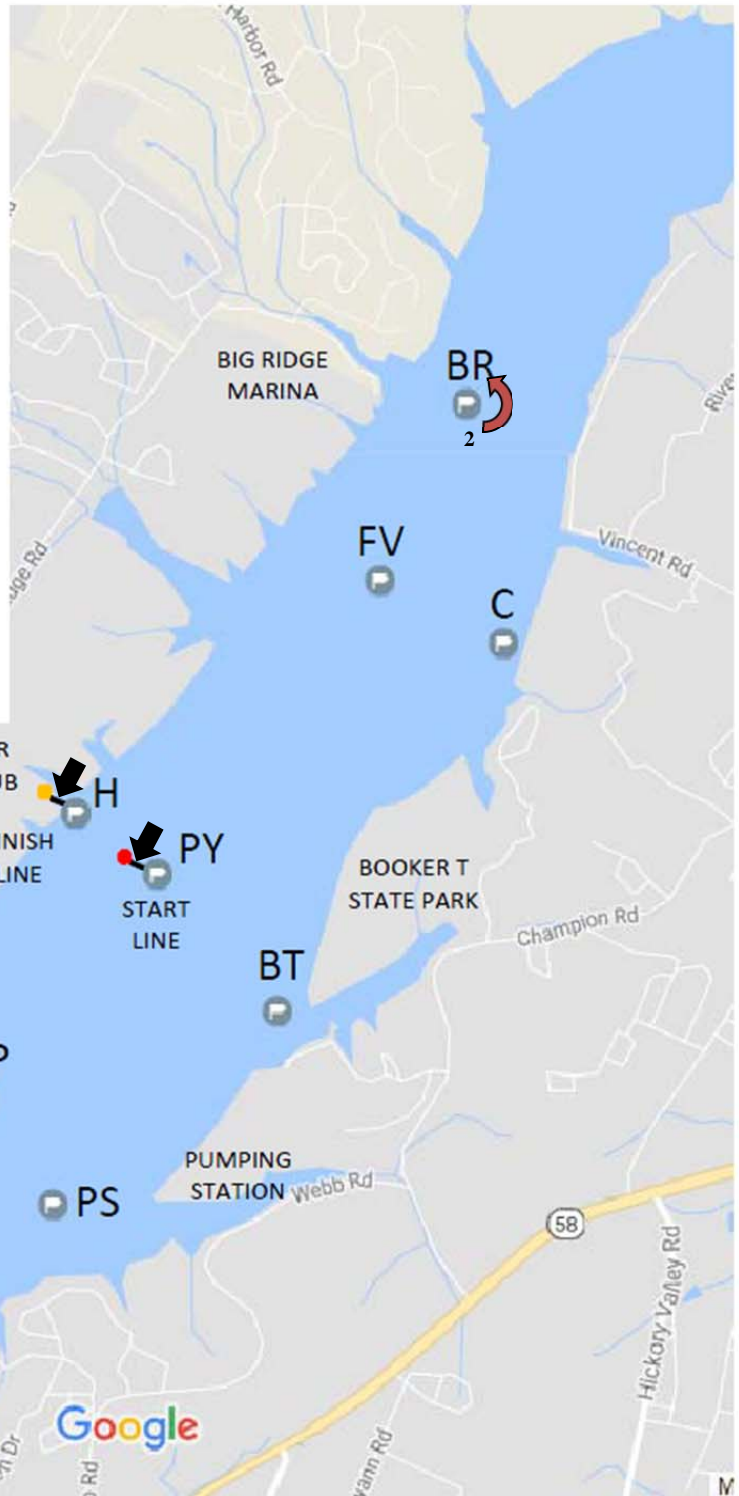
COURSE 13

PY-LS-BR-H

6.489 Nautical Miles

MARKS OF THE COURSE

- BK – BLINKER (DAY MARK)
- BR – BIG RIDGE NUN
- BT – BOOKER T MARK
- C – CASTLE MARK
- CG – COAST GUARD NUN
- FV – FAIRVIEW NUN
- GP – GOLD POINT NUN
- H – HARBOR CAN
- LS – LAKESHORE NUN
- PS – PUMPING STATION MARK
- PY – PYC NUN



PHRF TIME ON DISTANCE PURSUIT RACE		
Course 13 - Start Times	PY-LS-BR-H	
DISTANCE	6.489	
Scratch Boat ET	1790.964	
BOAT	PHRF	Start
Catalina 22 NS	276	:00
Catalina 22, Rainbow 24 NS	270	:39
Morgan 22 NS, Oday 222	264	1:18
Hunter 23.5 NS	261	1:37
Cal 24 NS, Oday 25 NS	255	2:16
Rainbow 24	252	2:36
Jeanneau Sonic 23 NS	246	3:15
Morgan 22	243	3:34
Oday 28 NS	240	3:54
Catalina 310 WK NS	231	4:52
S2 6.9 NS	228	5:11
Pearson 28 NS, Ericson 28 NS	219	6:10
Oday 28 IB NS, Ranger 26 NS	216	6:29
S2 6.9	210	7:08
San Juan 28 NS	207	7:28
Oday 28 IB	204	7:47
Freedom 30 NS, Holder 20 NS	201	8:07
Ranger Fun 23 NS, C&C 27-3 OB NS	198	8:26
J22 NS, S2 7.9 IB NS, Pearson 28, Ericson 28	192	9:05
Merit 25 NS	189	9:25
J24 NS, S2 7.9 OB NS, San Juan 28	186	9:44
Wavelength 24 NS, Holder 20	183	10:03
Ranger Fun 23	180	10:23
C&C 27-3 OB, Catalina 310 WK	177	10:42
J22, S2 7.9 IB	174	11:02
Merit 25	171	11:21
J24, S2 7.9 OB	168	11:41
J32 SD NS	165	12:00
Wavelength 24, Toufinou 8 NS	162	12:20
Impulse 26 OB NS	150	13:38
J32 NS	147	13:57
J32 SD	141	14:36
Impulse 26 OB	135	15:15
J29 MHO NS, Toufinou 8, Seascope 24 NS	132	15:34
Melges 24 NS, J32, J92S NS	123	16:33
J29 MHO, Corsair F24 MKII NS	111	17:51
Seascope 24	102	18:49
Melges 24, J92S	93	19:47
Corsair F24 MKII	81	21:05

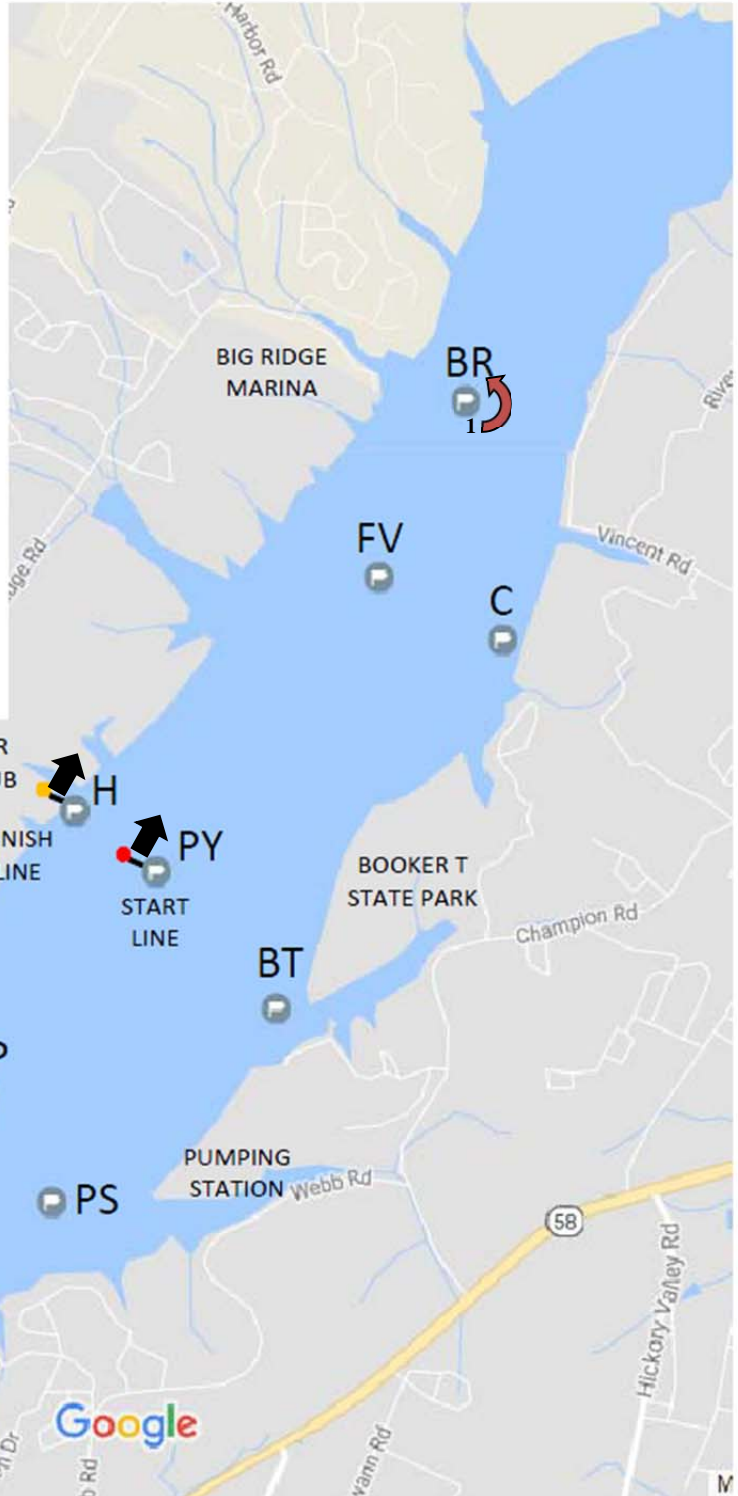
COURSE 14

PY-BR-LS-H

6.422 Nautical Miles

MARKS OF THE COURSE

- BK – BLINKER (DAY MARK)
- BR – BIG RIDGE NUN
- BT – BOOKER T MARK
- C – CASTLE MARK
- CG – COAST GUARD NUN
- FV – FAIRVIEW NUN
- GP – GOLD POINT NUN
- H – HARBOR CAN
- LS – LAKESHORE NUN
- PS – PUMPING STATION MARK
- PY – PYC NUN



PHRF TIME ON DISTANCE PURSUIT RACE		
Course 14 - Start Times	PY-BR-LS-H	
DISTANCE	6.422	
Scratch Boat ET	1772.472	
BOAT	PHRF	Start
Catalina 22 NS	276	:00
Catalina 22, Rainbow 24 NS	270	:39
Morgan 22 NS, Oday 222	264	1:17
Hunter 23.5 NS	261	1:36
Cal 24 NS, Oday 25 NS	255	2:15
Rainbow 24	252	2:34
Jeanneau Sonic 23 NS	246	3:13
Morgan 22	243	3:32
Oday 28 NS	240	3:51
Catalina 310 WK NS	231	4:49
S2 6.9 NS	228	5:08
Pearson 28 NS, Ericson 28 NS	219	6:06
Oday 28 IB NS, Ranger 26 NS	216	6:25
S2 6.9	210	7:04
San Juan 28 NS	207	7:23
Oday 28 IB	204	7:42
Freedom 30 NS, Holder 20 NS	201	8:02
Ranger Fun 23 NS, C&C 27-3 OB NS	198	8:21
J22 NS, S2 7.9 IB NS, Pearson 28, Ericson 28	192	8:59
Merit 25 NS	189	9:19
J24 NS, S2 7.9 OB NS, San Juan 28	186	9:38
Wavelength 24 NS, Holder 20	183	9:57
Ranger Fun 23	180	10:17
C&C 27-3 OB, Catalina 310 WK	177	10:36
J22, S2 7.9 IB	174	10:55
Merit 25	171	11:14
J24, S2 7.9 OB	168	11:34
J32 SD NS	165	11:53
Wavelength 24, Toufinou 8 NS	162	12:12
Impulse 26 OB NS	150	13:29
J32 NS	147	13:48
J32 SD	141	14:27
Impulse 26 OB	135	15:06
J29 MHO NS, Toufinou 8, Seascope 24 NS	132	15:25
Melges 24 NS, J32, J92S NS	123	16:23
J29 MHO, Corsair F24 MKII NS	111	17:40
Seascope 24	102	18:37
Melges 24, J92S	93	19:35
Corsair F24 MKII	81	20:52

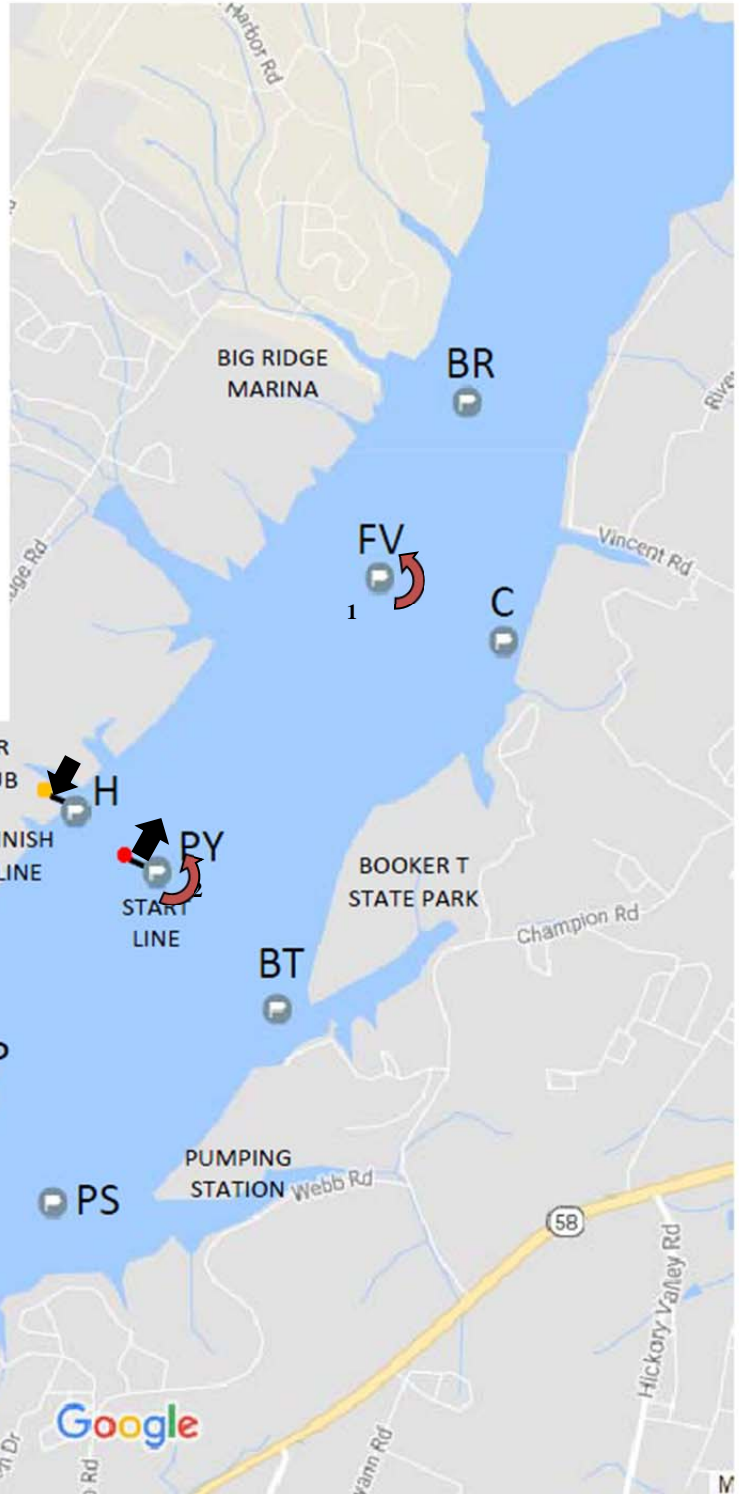
COURSE 15

PY-FV-PY-FV-H

4.006 Nautical Miles

MARKS OF THE COURSE

- BK – BLINKER (DAY MARK)
- BR – BIG RIDGE NUN
- BT – BOOKER T MARK
- C – CASTLE MARK
- CG – COAST GUARD NUN
- FV – FAIRVIEW NUN
- GP – GOLD POINT NUN
- H – HARBOR CAN
- LS – LAKESHORE NUN
- PS – PUMPING STATION MARK
- PY – PYC NUN



PHRF TIME ON DISTANCE PURSUIT RACE		
Course 15 - Start Times	PY-FV-PY-FV-H	
DISTANCE	4.006	
Scratch Boat ET	1105.656	
BOAT	PHRF	Start
Catalina 22 NS	276	:00
Catalina 22, Rainbow 24 NS	270	:24
Morgan 22 NS, Oday 222	264	:48
Hunter 23.5 NS	261	1:00
Cal 24 NS, Oday 25 NS	255	1:24
Rainbow 24	252	1:36
Jeanneau Sonic 23 NS	246	2:00
Morgan 22	243	2:12
Oday 28 NS	240	2:24
Catalina 310 WK NS	231	3:00
S2 6.9 NS	228	3:12
Pearson 28 NS, Ericson 28 NS	219	3:48
Oday 28 IB NS, Ranger 26 NS	216	4:00
S2 6.9	210	4:24
San Juan 28 NS	207	4:36
Oday 28 IB	204	4:48
Freedom 30 NS, Holder 20 NS	201	5:00
Ranger Fun 23 NS, C&C 27-3 OB NS	198	5:12
J22 NS, S2 7.9 IB NS, Pearson 28, Ericson 28	192	5:37
Merit 25 NS	189	5:49
J24 NS, S2 7.9 OB NS, San Juan 28	186	6:01
Wavelength 24 NS, Holder 20	183	6:13
Ranger Fun 23	180	6:25
C&C 27-3 OB, Catalina 310 WK	177	6:37
J22, S2 7.9 IB	174	6:49
Merit 25	171	7:01
J24, S2 7.9 OB	168	7:13
J32 SD NS	165	7:25
Wavelength 24, Toufinou 8 NS	162	7:37
Impulse 26 OB NS	150	8:25
J32 NS	147	8:37
J32 SD	141	9:01
Impulse 26 OB	135	9:25
J29 MHO NS, Toufinou 8, Seascope 24 NS	132	9:37
Melges 24 NS, J32, J92S NS	123	10:13
J29 MHO, Corsair F24 MKII NS	111	11:01
Seascope 24	102	11:37
Melges 24, J92S	93	12:13
Corsair F24 MKII	81	13:01